



2024 International Moth Australian Open National Championships

9 to 14 January 2024

Sailing Instructions

THE ROYAL
YACHT CLUB
OF TASMANIA



ORGANISING AUTHORITY: The Royal Yacht Club of Tasmania

Vaikobi
OCEAN PERFORMANCE

Sailing Instructions

[NP] denotes a rule that shall not be grounds for protests by a boat. This changes RRS 60.1(a).

[DP]denotes a rule for which the penalty is at the discretion of the Jury.

[SP]denotes a rule for which a standard penalty may be applied by the Race Committee without a hearing or a discretionary penalty applied by the Jury with a hearing.

1 RULES

- 1.1 The regatta will be governed by the rules as defined by the 2021-2024 World Sailing Racing Rules of Sailing (RRS), the Prescriptions and Special Regulations (Part 2) of Australian Sailing (AS).
- 1.2 The Race Management Guidelines of the International Moth Class Association will apply. Failure to follow the guidelines will not be grounds for redress.

2 IDENTIFICATION[DP][NP]

- 2.1 Boats may be required to affix bow stickers provided by the Organising Authority on both sides of the forward 25% of the hull, 200mm from the bow. Boats shall affix the stickers in accordance with any instructions given by the Organising Authority. The requirement to affix stickers will be confirmed at registration.

3 CAMERAS AND ELECTRONIC EQUIPMENT[DP][NP]

- 3.1 Boats may be required to carry on board cameras, sound equipment or positioning equipment as specified by the Organising Authority. Competitors may also use their own camera recording equipment. A boat shall not be given redress based on a claim involving this equipment. This changes RRS 62.1.

4 NOTICES TO COMPETITORS

- 4.1 Notices to competitors will be posted on the Official Notice Board which is located at the RYCT OTB Centre.

5 CHANGES TO SAILING INSTRUCTIONS

- 5.1 Any change to the sailing instructions will be posted not less than one hour before the scheduled warning signal on the day it will take effect. Any change to the race schedule will be posted by 1900hrs the day before it takes effect.

6 SIGNALS MADE ASHORE

- 6.1 Signals made ashore will be displayed on the flagpoles on the balcony on the northern side of the RYCT clubhouse.
- 6.2 When code flag AP is displayed ashore "1 minute" is replaced with "not less than 45 minutes after AP is lowered". This amends Race Signal "AP"

7 SCHEDULE OF EVENTS

7.1

Date	Event	Time/First Warning Signal
Tuesday 9 January	Practice Races	14:00
Wednesday 10 January	Competitor Briefing	10:00
	Championship Races	13:00
Thursday 11 January	Championship Races	13:00
Friday 12 January	Championship Races	13:00
Saturday 13 January	Championship Races	13:00
Sunday 14 January	Championship Races	13:00
	Prize Presentation	18:00

7.2 On Sunday 14 January, there will be no warning signal after 1600hrs.

7.3 The Race Committee may change the schedule of races (in accordance with SI 5.1) at its absolute discretion.

8 FORMAT OF RACING

8.1 The Championship will consist of a maximum of fifteen (15) races.

8.2 There will be no more than seven races conducted over a two-day period.

9 CLASS FLAGS

9.1 The class flag will be a Black Moth class insignia on a white background.

10 THE COURSE

10.1 Appendix B shows the courses to be sailed, the order in which the marks are to be passed, the side on which each mark is to be left, and the signals indicating the number of rounds to be sailed. The course to be sailed will be displayed on the Race Committee boat by way of board.

10.2 No later than the warning signal, the Race Committee signal boat may display the approximate compass bearing from the race committee boat to Mark 1.

11 MARKS

11.1 Marks 1, 2S and 2P will be orange inflatable buoys.

11.2 The starting mark will be a yellow inflatable buoy.

11.3 The finishing mark will be a black & white chequered inflatable buoy.

12 THE START

12.1 The starting line will be between a mast displaying an orange flag on the Race Committee boat and the starting mark.

- 12.2 A boat starting later than 4 minutes after her starting signal will be scored Did Not Start (DNS) without a hearing. This amends RRS Appendix A4 and A5.
- 12.3 To alert boats that a race or sequence of races will begin soon, the orange starting line flag will be displayed with one sound signal not less than five minutes before the Warning Signal is displayed.

13 THE FINISH

- 13.1 The finishing line will be between the mast displaying a blue flag on the Race Committee boat and the finishing mark.
- 13.2 Grand Prix finish-When the leading boat completes the course and finishes, the Race Committee boat at the finish will immediately display a chequered flag with a sound signal. The chequered flag will be removed at the end of the finishing window time limit. All boats that;
- a) have completed a lap before the chequered flag is displayed, but then fail to finish while it is displayed, or
 - b) cross the finishing line while the chequered flag is displayed shall be deemed to have finished irrespective of the number of laps completed. Their positions in the race will be based on the order when they either completed their last lap or finished, with those having completed more laps finishing ahead of those with fewer laps. This changes RRS 28.1, 35, A4 & A5

14 TIME LIMITS

- 14.1 Target time is 25 minutes.
- 14.2 The finishing window is 12 minutes.
- 14.3 Boats failing to complete one lap earlier than 12 minutes after the first boat sails the course and finishes shall be scored Did Not Finish without a hearing. This changes RRS 35, A4 and A5.
- 14.4 The time limit for the first boat will be 45mins from the starting signal.

15 PENALTY SYSTEM

- 15.1 The penalty for a breach of a Class Rule will be a Discretionary Penalty [DP] and may be less than disqualification.

16 PROTESTS AND REQUESTS FOR REDRESS

- 16.1 Protest forms are available from regatta website or the OTB Centre. Protests and requests for redress or reopening shall be delivered there within the protest time limit.
- 16.2 The protest time limit shall be posted on the official notice board located at the RYCT OTB Centre. The protest time limit for each fleet will be 60 minutes after the last boat of that fleet has finished the last race of the day or the race committee signals no more racing today, whichever is later. The same time limit applies to protests by the Race Committee and Jury about incidents they observe in the racing area. This time limit also applies to requests for redress. This changes RRS61.3 and 62.2.

- 16.3 Notices will be posted within 30 minutes of the protest time limit to inform competitors of hearings in which they are parties or named as witnesses. Hearings will be held in the Jury room located at the RYCT Clubhouse, mezzanine floor. Hearings may start before the scheduled time with the agreement of all parties.
- 16.4 On the last day of racing a request for reopening a hearing shall be delivered:
- i) within the protest time limit if the party requesting reopening was informed of the decision on the previous day;
 - ii) no later than 30 minutes after the party requesting reopening was informed of the decision on that day. This changes RRS66.
- 16.5 On the last scheduled day of racing a request for redress from a Jury decision shall be delivered no later than 30 minutes after the decision was posted. This changes RRS62.2.

17 ARBITRATION

- 17.1 Appendix T shall apply, modified so that an arbitrator may form part of a subsequent protest panel.

18 SCORING

- 18.1 Six (6) races are required to be completed to constitute a valid Championship.
- 18.2 When fewer than 6 races have been completed, a boat's score will be the total of her race scores.
- 18.3 When from 6 to 10 races have been completed, a boat's series score will be the total of her race scores excluding her worst score.
- 18.4 When from 11 or more races have been completed, a boat's series score will be the total of her race scores excluding her two worst scores.

19 SAFETY[DP][NP][SP]

- 19.1 Boats intending to race shall sign on before the first race of the session and off within protest time at the Desk in the RYCT OTB Centre.
- 19.2 Penalty for not signing on will be a 20% scoring penalty for the first race of the day. Penalty for not signing off will be a 20% scoring penalty for the last race of the day. This amends A4 & A5.
- 19.3 Boats not leaving the shore for the day's races shall notify the race office as soon as possible.
- 19.4 Boat that retires from a race shall notify the Race Committee as soon as possible.

20 EQUIPMENT AND MEASUREMENT CHECKS

- 20.1 All boats may be inspected for Class Rules compliance prior to racing.
- 20.2 In addition, any boat or equipment may be checked for compliance with the class rules and sailing instructions at any time.
- 20.3 [DP][NP] Limitations of equipment-only measured equipment shall be used;
- 1) A maximum of TWO sails shall be used during the regatta.
 - 2) A maximum of TWO mast bases and TWO mast tips, TWO rudders and TWO foils / horizontals shall be used during the regatta.
 - 3) Foils shall only be changed ashore at the Club.
 - 4) Ballast weights, if used, may only be added, removed, or changed ashore at the club and may not be changed on the water.
- 20.4 [DP][NP] All boats, when not afloat, shall be placed within the vicinity of the regatta venue.

21 SUPPORT BOATS[DP][NP]

- 21.1 Coaches and other support personnel shall not be in the area where boats are racing or within 50 metres of any boat racing from the time of the preparatory signal until all boats have finished or the Race Committee signals a postponement, general recall or abandonment. This SI does not apply during rescue operations.
- 21.2 All support boats are at all times submitting to the Organising Committee and Race Committee authority, are legally considered as assistance / rescue boats and shall comply with any instructions given by these authorities or by the police.
- 21.3 Private coach or support boats will be required to be registered with the organising authority and maybe marked with identifying flags issued by the OA.
- 21.4 Drivers may be required to attend a briefing/s.
- 21.5 Drivers shall hold a powerboat licence from an Australian State Authority.
- 21.6 All registered coach and support boats will carry on board and operate while on the water at least one VHF radio capable of transmitting and receiving on VHF Channels and agree to assist the RC if directed to do so.
- 21.7 In the State of Tasmania all persons on board a vessel under 6m LOA shall wear a lifejacket at all times while afloat.
- 21.8 Competitors shall not be tied or raft to a support boat from the first warning signal (or any other time the OA considers appropriate) of the day until racing has been concluded for the day. Between races, coach and support boats shall not transfer equipment to or from their supported boats unless in a medical or emergency requirement threatening the health of the skipper or the flotation of the boat and only with the expressed permission of the RC. (This does not include food or refreshments).

22 TRASH DISPOSAL

- 22.1 Trash may be placed aboard support and race committee boats.

23 RADIO COMMUNICATION[DP][NP]

- 23.1 A boat shall neither make radio or data transmissions while racing nor receive radio or data communications not available to all boats. This restriction also applies to mobile telephones.

24 PRIZES

- 24.1 The Organising Authority will provide prizes as stated in the Notice of Race.

25 RISK STATEMENT

- 25.1 RRS 3 of the Racing Rules of Sailing states: "The responsibility for a boat's decision to participate in a race or to continue racing is hers alone."
- 25.2 Sailing is by its nature an unpredictable sport and therefore inherently involves an element of risk. By taking part in the event, each competitor agrees and acknowledges that:
 - a) They are aware of the inherent element of risk involved in the sport and accept responsibility for the exposure of themselves, their crew and their boat to such inherent risk whilst taking part in the event;
 - b) They are responsible for the safety of themselves, their boat and their other property whether afloat or ashore;
 - c) They accept responsibility for any injury, damage or loss to the extent caused by their own actions or omission;
 - d) Their boat is in good order, equipped to sail in the event and they are fit to participate;

- e) The provision of a race management team, patrol boats and other officials and volunteers by the event organiser does not relieve them of their own responsibilities;
- f) The provision of patrol boat cover is limited to such assistance, particularly in extreme weather conditions, as can be practically provided in the circumstances.
- g) It is their responsibility to familiarise themselves with any risks specific to this venue or this event drawn to their attention in any rules and information produced for the event and to attend any safety briefing held for this event.

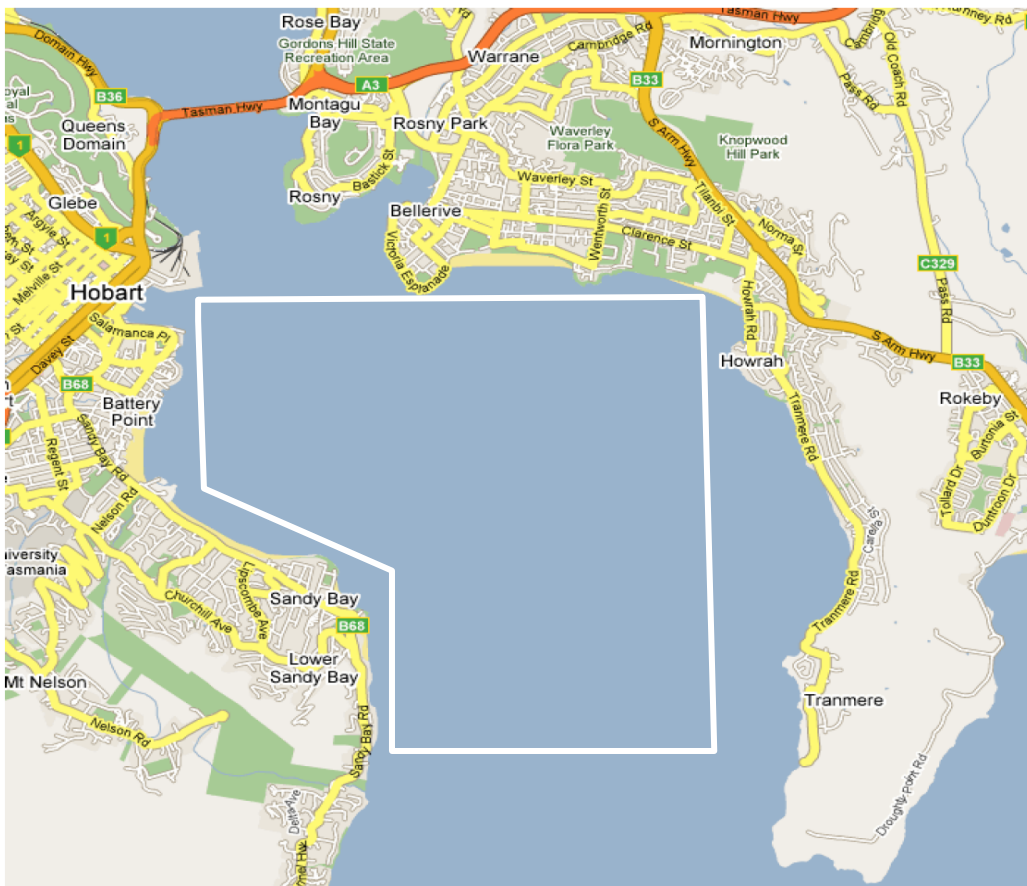
26 INSURANCE[DP][NP]

26.1 Each participating boat shall be insured with valid third-party liability insurance with a minimum cover of AUD\$10,000,000 or the equivalent per incident.

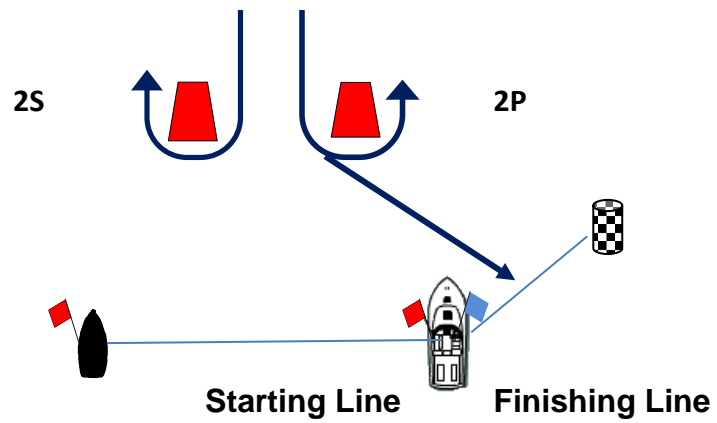
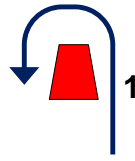
27 RIGHTS TO USE NAME AND LIKENESS

27.1 By participating in an event, a competitor automatically grants to the Organising Authority and the sponsors of the event, the right in perpetuity, to make, use and show, from time to time and at their discretion, any motion pictures, still pictures and live, taped or film television and other reproductions of him/her during the period of the said event in which the competitor participated and in all material related to the said event without compensation.

Appendix A – Race Area



Appendix B – Course Diagrams



Course Descriptions

Course L2 Start – 1 – 2S/2P – 1 – 2P – Finish

Course L3 Start – 1 – 2S/2P – 1 – 2S/2P – 1 – 2P – Finish

Marks 1 and 2P will be left to Port. Mark 2S will be left to Starboard