



Royal Yacht Club of Tasmania
Time Trial for Powerboats &
Yachts Under Power
26 November 2023
Sailing Instructions

NB: This event is not a race



Sailing Instructions

1. RULES

As described in Notice of Trial.

2. OBJECTIVE & NOMINATION OF ELAPSED TIME AND SPEED

- a. The objective of the Trial is to complete the course travelling as close as possible to a speed nominated by the crew of the boat, and between 6 and 15 knots, finishing in a time as close as possible to the elapsed time nominated by the crew of the boat.
- b. Estimated elapsed time in format HH:MM:SS and speed X.X knots to be emailed to sailing@ryct.org.au at latest by 09:30 on Sunday 26 November.

3. TIMING

- a. A boat's official elapsed time will begin at her allocated starting time and will stop as any part of her hull crosses the finishing line from the direction of the last mark of the course.
- b. The elapsed time taken at the finishing line by the Finishing Boat will be the boat's official time and will be final.
- c. Allocated starting times will be posted on the RYCT Noticeboard on the clubhouse close to the entrance to the marina.

4. SCHEDULE OF EVENTS

| Date | Event | Time |
|--------------------|---|-------|
| Friday 24 November | Entries Close | 17:00 |
| Sunday 26 November | Briefing at RYCT | 9:30 |
| Sunday 26 November | Nomination of Elapsed Times/Speeds Close | 9:30 |

5. COURSES

The diagram and description in Addendum A show the course, the turning mark locations, the order in which marks are to be passed, and the side on which each mark is to be left.

6. THE START

- a. The starting line will be between a Starting Boat in the vicinity of the DSS Permanent Mark at one end and the DSS Permanent Mark at the other end.

- b. Each boat shall radio their boat name and intention to participate in the Trial to the Starting Boat on VHF Channel 14 within the minute prior to their allocated starting time. All other boats will maintain radio silence on VHF Channel 14 while boats are starting unless in an emergency.

7. THE FINISH

The finishing line will be between a Finishing Boat near Richardson's Beach and a nearby yellow inflatable buoy. Boats may confirm their official finishing time with the Finishing Boat on VHF Channel 14 after their finish.

8. PENALTY SYSTEM

Blatant changes to nominated speed within 100 metres of a timing point may attract a penalty of one minute to the participant's estimated elapsed time.

9. RADIO COMMUNICATION

- a. All boats shall carry a marine band VHF radio capable of receiving and transmitting on Marine VHF channels 14 and 16. All boats shall maintain a listening watch on Channel 14 throughout the Trial.

10. PRIZES

As set out in the Notice of Trial.

11. DISCLAIMER OF LIABILITY

Participants in this Time Trial do so entirely at their own risk. The organising authority will not accept any liability for material damage or personal injury or death sustained in conjunction with or prior to, during, or after the event.

12. INSURANCE

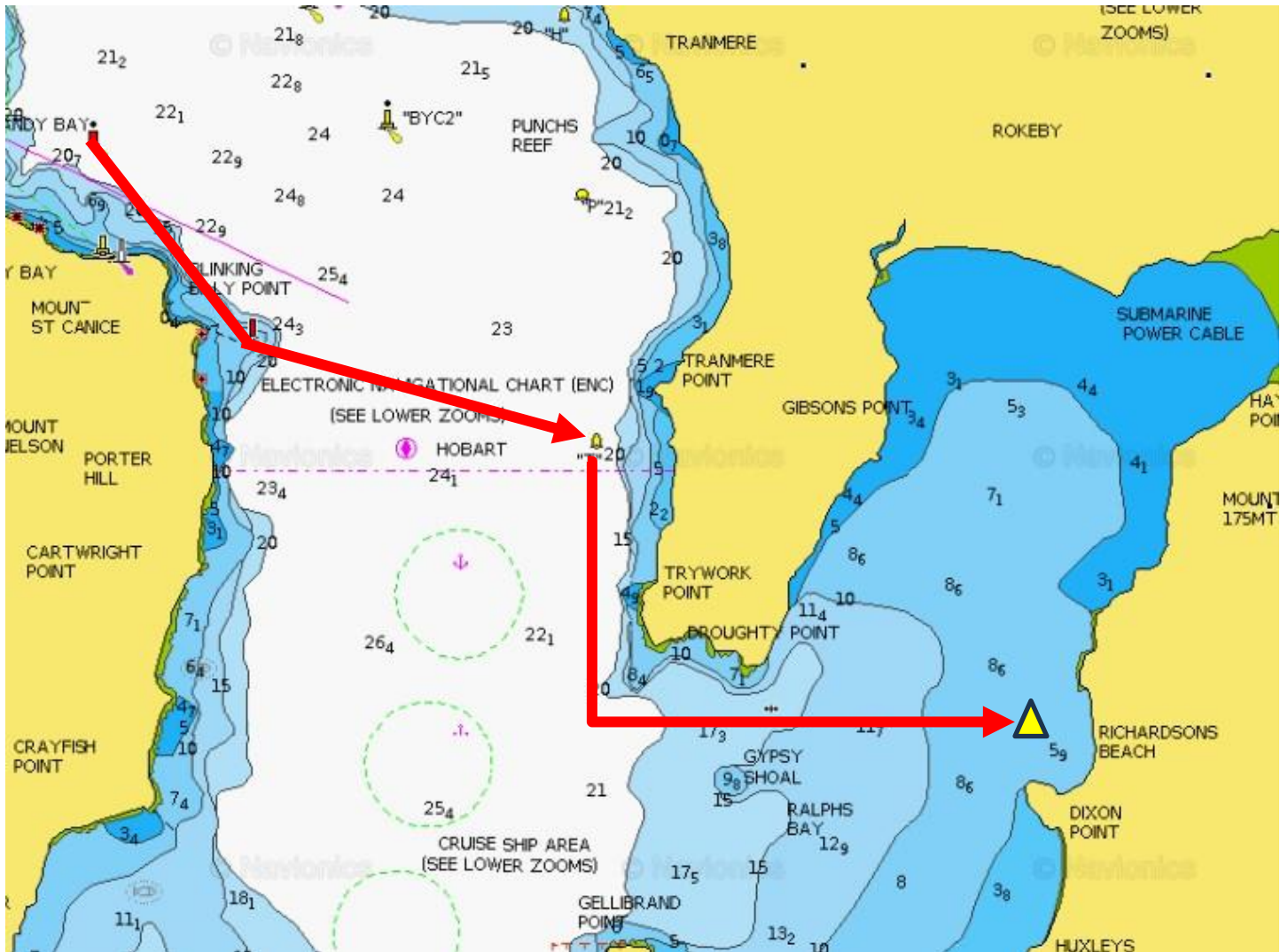
Each participating boat shall be insured with valid third-party liability insurance with a minimum cover of AUD10 million per event or the equivalent in another currency.

13. RIGHTS TO USE NAME AND LIKENESS

In participating in an event, a competitor automatically grants to the Organising Authority and the sponsors of the event, the right in perpetuity, to make, use and show, from time to time and at their discretion, any motion pictures, still pictures and live, taped or filmed television and other reproductions of him/her during the period of the competition in these events event in which the competitor participates and in all material related to the events without compensation.

Addendum A – Course Diagram and Description

Not to scale



Course

Start Line, at Mark D (42° 53.916 147° 20.880) then to
John Garrow Light left to port then to
Mark T (42° 55.409 147° 24.194) left to starboard and then to
Finishing Line, yellow inflatable buoy at (42° 56.777 147° 26.997).

(Coordinates may differ from those found on electronic charts.)