

# RYCT Marina Newsletter



## CLEANER MARINA FOCUS AT THE CLUB

This edition of the Marina Newsletter focuses on the RYCT's commitment to promoting and delivering best management practices for protecting the environment in which we live and work. The RYCT is actively working towards reducing our environmental footprint in a bid to protect and preserve Tasmania's waterways.

This month's newsletter articles cover:

- Updates and current information
- Reporting oil and fuel spills on the marina
  - Know where your spill kits are
- Introduction of Environmental Levy
- The Environment - How you can help



## CERTIFICATE OF CURRENCY

A reminder to all berth holders to ensure that a current Insurance Certificate has been supplied to the marina office.

If your insurance has recently been renewed, please forward a copy to [admin@ryct.org.au](mailto:admin@ryct.org.au)

## WINTER IN THE SLIP YARD

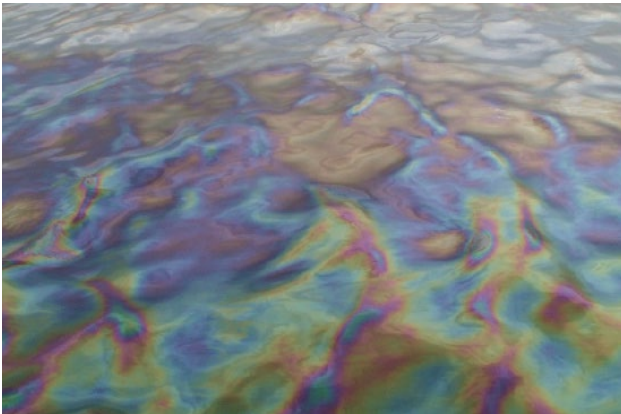
Winter is a great time to slip your boat. The RYCT Slip Yard is offering an extra 5% discount on slipping during July and August.

Call Luke or Frank on 0419 885 420 to make a booking

## WATCH YOUR STEP!

Winter is definitely here and the marina can get icy overnight.

Please take care walking on slippery surfaces, particularly A arm walkway and gangways.



## REPORTING OIL AND FUEL SPILLS ON THE MARINA

Any diesel, oil leaks or spills, no matter how small, must be reported to the marina staff immediately so they can contain and commence clean up.

1. Identify the cause and if possible, stop the source
2. Notify the marina staff so they can contain the spill

*2 cups of oil released into the water can spread into a 1-acre oil slick, larger than a football field!*

## KNOW WHERE YOUR SPILL KITS ARE

In the event that marina staff are not available, spill kits are located around the premises for use in an emergency.

Oil and fuel spill kits are bright yellow in colour and can currently be found on the fuel dock and outside the Bosuns office.

Please note these are not to be used as rubbish bins!



# Environmental Levy



The Royal Yacht Club of Tasmania will soon be introducing an Environmental Levy.

The purpose of the Environmental Levy is to support the delivery of a range of environmental works, services and projects at the Royal Yacht Club of Tasmania, while also providing an important funding source for future environmental initiatives across the marina and slipway.

Key aims of the Levy are to:

- Provide for the protection of the environment in and around the Royal Yacht Club of Tasmania and its waters.
- Strive to achieve industry best practices and excellence in quality of service to members and customers and in obligations to the environment.

## Who pays the Levy?

- The environmental levy will be charged to each boat slipped at RYCT where any work done within the slipway service area involves an environmentally relevant activity e.g., washing, sanding, grinding, scraping, degreasing etc. This fee applies to all boats being lifted out of the water and washed (Race Slips and Marine Surveys as required).
- All slipway customers, members and non-members, will be required to pay the levy to assist us with environmental services on the slipway and to respond to any environmental incidents.

## When to pay the Levy

- The Environmental Levy will commence from 1 July 2022.
- You must pay the Levy at the same time you are required to pay your slipping fees. Member slipping fees will be added to your RYCT member account and non-members must pay all slipping fees on the day their boat is returned to the water.
- The Environmental Levy will replace the current annual Slipway Maintenance Levy.

## Levy charges

- The Environmental Levy is a flat fee of \$40 for each slip. The Levy will be reviewed annually.

## THE ENVIRONMENT - HOW YOU CAN HELP

We all have a role to play in reducing the impact on the environment, you can help in a number of ways:

- ☞ Everyone is expected to act in an environmentally responsible and safe manner and to cooperate with marina staff
- ☞ It is the responsibility of members and marina users to comply with all the relevant environmental laws and rules and to recognise that all forms of pollution and contamination are prohibited on the premises.
- ☞ Be aware of fumes and odours generated by your boat and avoid the creation of fumes or odours.
- ☞ All marina users must keep the premises in a clean and tidy condition.
- ☞ Disposal of any waste matter into the marine environment is prohibited at all times.  
Overboard dumping of any debris is not permitted. Works which allow debris to drop into the water are not permitted. Washing down of materials generated from maintenance or repairs into the water is prohibited.
- ☞ Bilge water, sewage, grey water, run off from washing vessels, and other liquid wastes are not to be discharged into the marina or surrounding environment.
- ☞ All harmful wastes (like oil, oily waters and products, noxious liquids, drained oil filters, scrap metal including anodes, batteries, acids), fish cleaning waste and all other harmful waste must be removed directly from the vessel to an approved waste bin.
- ☞ All costs incurred in cleaning up spillages and in relation to any pollution are recoverable from the vessel owner.
- ☞ In-water hull cleaning, or any process that could remove antifouling paint from the vessel's hull, is prohibited. In-water cleaning should only occur for quick wash downs after returning from your trip. Members should wash the vessels deck and exterior by hand with water only. Care is to be taken to minimise the amount of run off. Pressure washing is to be conducted on the Slip Way only.

